

Stvarajte budućnost izvrsnih oblika
Create excellence shape future

YE All-Električne mašine za brizganje
YE All-Electric Injection Molding Machine



SANJA PLAST S.R.

NINGBO YONGHUA PLASTIC MACHINERY MANUFACTURING CO.,LTD.



KRATKO PREDSTAVLJANJE KOMPANIJE

Nalazeći se na obali Istočnog kineskog mora i Orijentalne luke - Ningbo, Ningbo Yonghua Plastic Machinery Manufacturing Co., Ltd. je profesionalni proizvođač mašina za brizganje plastike koji je osnovan 1985. godine. Držeći se razvojnog koncepta "uspostavljanje integriteta kao osnove i težnja za obostranim uspehom", ne samo da je integrisao vodeću svetsku naučnu tehnologiju u inovacioni element, već je takođe promovisao plastične mašine sa jedinstvenom kreativnom tehnologijom iz Kine širom sveta.

Trenutno, kompanija ima preko 500 zaposlenih, 0.25 milijardi fiksnih sredstava i 100000m² fabrike. Istovremeno, uvela je veliki broj naprednih horizontalnih i vertikalnih obradnih centara kao glavne procesne opreme; bazirajući se na modernom konceptu upravljanja, dobila je ISO9001:2008 Sertifikat sistema kvaliteta; koristi efikasnu proizvodnu liniju i 5S upravljanje na terenu kako bi obezbedila izvrstan i stabilan kvalitet proizvoda.

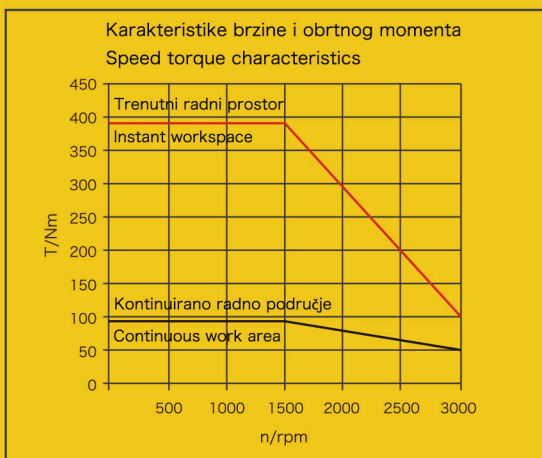
Ono za čim kupci teže je cilj naših nastojanja. Kao i uvek, pružićemo klijentima izvrsne proizvode i usluge. Iskreno pozivamo domaće i strane klijente da pregovaraju i sarađuju s nama kako bismo zajedno napredovali i briljirali.

BRIEF INTRODUCTION TO THE COMPANY

Located at the shore of East China Sea and Orient Port—Ningbo, Ningbo Yonghua Plastic Machinery Manufacturing Co., Ltd. is a professional manufacturer of plastic injection molding machine that established in 1985. Adhering to the development concept of "establishing based integrity and striving for mutual win", it not only integrated world leading scientific technology into innovation element, but also promoted the plastic machinery with Chinese unique creative technology to the whole world.

At present, the company has over 500 employees, 0.25 billions of fixed assets and 100000 square meters of factory. Meanwhile, it introduced large number of advanced horizontal and vertical processing centers as its major processing equipments; based on the modernized management concept, it obtained ISO9001:2008 Quality System Authentication; besides, it adopted lean production line and field 5S management to guarantee excellent and stable product quality.

What the customers pursue for is the goal of our endeavor. We will provide clients with excellent product and service as we always do. We sincerely welcome domestic and foreign clients to negotiate and cooperate with us so as to go forward hand in hand and create brilliance.



Duplirana pozicija
brizganja
Injection position
duplicated

0.01
mm

Velika brzina obrade
High speed

1200
mm/s

Veliko ubrzanje zahvaljujući
servo motoru visokog odziva i
niske inercije
Actual screw acceleration
using high response, low
inertia servo motors

35ms

YONGHUA YE - SERIJA ELEKTRIČNIH MAŠINA ZA BRIZGANJE PLASTIKE

Modeli serije Yonghua YE su samorazvijene potpuno električne mašine za brizganje plastike. Opremljene mehaničkom strukturom pogodnom za visokobrzinsko i visokoprecizno delovanje, sa visokobrzinskim servisnim kontrolnim sklopom, pogodne su za industriju obrade plastike koja teži visokoj efikasnosti, visokoj tehnologiji proizvodnje i visokim zahtevima.

Okupljajući najnapredniju tehnologiju pogona i prenosa, u kombinaciji sa visokim tehničkim zahtevima za brizganje, uz jednostavan dizajn korisničkog okruženja, te primenom moderne digitalne tehnologije obrade, ima prednosti uštede energije, zaštite životne sredine, visoke brzine i efikasnosti, precizne kontrole, pouzdanog rada, jednostavnog rukovanja itd. Performanse, maksimalno zadovoljavajući različite zahteve klijenata u pogledu stabilnosti mašine, efikasnosti proizvodnje i performansi zaštite životne sredine.

Široko se koristi u različitim oblastima industrije obrade plastike, posebno u elektronskim i električnim proizvodima, fotoelektričnim digitalnim proizvodima, auto delovima i avio proizvodima, medicinskoj i prehrambenoj ambalaži, kozmetičkoj ambalaži, plastičnim igračkama, sportskoj i rekreacionoj opremi, optici i drugim industrijama.

YONGHUA YE-ALL ELECTRIC INJECTION MOLDING MACHINE SERIES

Yonghua YE series model is a self-developed all-electric injection molding machine. Equipped with a mechanical structure suitable for high-speed and high-precision operation, equipped with a high-speed service control circuit, it is suitable for the plastic processing industry that pursues high efficiency and high production technology and high requirements.

Gathering the most advanced drive and transmission technology, combined with rich molding professional technical requirements, combined with the simple and easy-to-use humanized design concept, and adopted modern digital processing technology, it has the advantages of energy saving, environmental protection, high speed and high efficiency, precise control, reliable operation, convenient operation, etc. Performance, to the maximum extent to meet the various requirements of customers for machine stability, production efficiency, environmental protection performance.

It is widely used in various fields of plastic processing industry, especially in electronic and electrical products, photoelectric digital products, auto parts and aviation products, medical and food packaging, cosmetic packaging, plastic toys, sports and leisure equipment, optics and other industries.

Karakteristike Yonghua YE električnih mašina za brizganje plastike

Characteristics of Yonghua YE Full-electric injection molding machine

Opšte / Overall:

- Efikasna ukupna reakcija, koja je brza i ima brz odziv. Vreme odziva ubrizgavanja je 30ms; više funkcija može raditi istovremeno; pomoćna mašina je realizovala potpuno automatsko brizganje; efikasnost proizvodnje je 3-5 puta veća od uobičajene mašine.
- Visoko pouzdan rad mašina. Sistemski kontrolisan i realizovan samonadzor i zaštita, što je učinilo da cela mašina može bezbedno da radi bez greške; na taj način, performanse mašine su izdržljive u optimalnom stanju.
- Koncept dizajna za visoko zahtevan i stabilan rad sa kombinacijom ojačanih čeličnih materijala sa debelim zidom, što je smanjilo vibracije pri brzom otvaranju i zatvaranju kalupa. Visoka preciznost, visoka stabilnost, stopa defekta proizvoda pala je na najniži nivo.
- Efficient overall reaction, which is fast and high response. The response time of injection speed is 30ms; the multiple functions can operate simultaneously; the auxiliary machinery realized full automatic injection molding; the production efficiency is 3-5 times higher than common machine.
- High reliable machinery operation. The system control realized self monitoring and protection, which made the entire machine can operate safely without fault; thus, the machine performance is durable in optimal state.
- High-intensive mounting design concept with reinforced thick wall steel material combination, which reduced the vibration when opening and closing the mould rapidly. High accuracy, high stability, the product defect rate dropped to its lowest level.

Stežanje / Clamping:

- Usvojena napredna unutrašnja involucionna struktura sa 5 tačaka, koja ostvaruje brže cirkulaciono brizganje velike brzine.
- Optimizovana struktura klipnjače, unapređena sportska svojstva, poboljšana čvrstoća šablona i smanjena inercija kretanja.
- Usvojen uređaj za zaključavanje visokog krutog režima, koji može opremiti široku ploču i postići visoko precizno stabilno brizganje.
- Opremljen mehanizmom za potporu ploče visokih performansi i vođenjem ploče, koji može zadržati paralelnost ploče i preciznost pozicioniranja kalupa.
- Fiksna ploča i pokretna ploča su usvojile strukturu tipa kutije, koja je zadovoljila lagane i visoke krute zahteve kako bi primenila ujednačenu silu stežanja na kalup.
- Adopted advanced inward involution 5-point type toggle structure, which realized faster high-speed circulated injection molding.
- Optimized structure of connecting rod, promoted sports property, enhanced template strength and reduced movement inertia.
- Adopted high rigid mode locking device, which can equip wide platen and achieved high precise stable injection molding.
- Equipped with high-performance platen supporting mechanism and platen guidance, which can keep platen parallelism and precision of mould positioning.
- The fixed platen and movable platen adopted box type structure, which satisfied lightweight and high rigid demands so as to apply uniform clamping force to the mould.

Računarsko okruženje / Computer interface

- 15-inčni LCD ekran osetljiv na dodir u boji učinio je da operacija postane praktičnija i lakša. Način rada i podešavanje slike mogu se realizovati direktnim klikom na ekran.
- Eksplicitan izgled interfejsa i zgodan rad sistema; kompatibilan režim rada sa hidrauličnom mašinom omogućava operateru da lako uhvati.
- Podržava više jezika, uključujući kineski, engleski, nemački i arapski itd.
- Interna memorija može da uskladišti 100 parametara brizganja i može se povećati u skladu sa zahtevima kupaca.
- 15-inch touch screen color liquid crystal interface made the operation become more convenient and easy. The operation method and picture setting can be realized by clicking the screen directly.
- Explicit interface layout and convenient system operation; the compatible operation mode with hydraulic machine enabled operator to grasp easily.
- Support multiple languages, including Chinese language, English, German, and Arabic etc.
- The internal memory can store 100 injection molding parameters and can increase according to customers' demands.

Brizganje / Injection:

- Usvojen servo motor visokog odziva i niske inercije; odgovarajući dizajn opterećenja niske inercije može ostvariti ubrzanje stvarnog zavrtnja.
- Visokoprecizni višepretenasti apsolutni enkoder i senzor pritiska ubrizgavanja mogu kontrolisati položaj vijka i stabilan pritisak ubrizgavanja, održavanje pritiska pri izbacivanju i inženjering uzvratnog pritiska.
- Adopted high-response and low-inertia servo motor; the corresponding low inertia loading design can realize the acceleration of actual screw.
- The high-precision multi-ring absolute encoder and injection pressure sensor can control screw location and stable sol, ejection pressure maintaining and back pressure engineering.

Sistem kontrole / Control system:

- Usvojite servo sistem velike brzine sa potpuno zatvorenom petljom za kontrolno kolo, što skraćuje vreme skeniranja na 1/6 tradicionalnog vremena i ostvaruje veliku brzinu i preciznu kontrolu; osim primopredaje pritiska održavanja, takođe može da smanji različite greške i poboljšati kvalitet proizvoda.
- Detektor pritiska za brizganje - moć razdvajanja namenskog pojačala sa senzorom opterećenja je poboljšana do 5 puta nego ranije sa pritiskom kontrolisanim na 0,1 MPa; lokacija visokopreciznog enkodera se kontroliše na 0,03 mm, brzina je tačna do 0,1 mm/s; pogodan je za proizvodnju ultra preciznih proizvoda sa većom ponovljenom tačnošću pozicioniranja; može postići stabilno precizno formiranje kalupa.
- Adopt the high-speed fully closed-loop servo system to control circuit, which shortened the scanning time to 1/6 of traditional time and realized high-speed and high-precision control; except for pressure handover of pressure maintaining, it can also reduce various errors and improve the product quality.
- Injection molding pressure detector-the resolving power of load sensor dedicated amplifier has been enhanced to 5 times than before with pressure controlled at 0.1 MPa; the location of high-precision encoder is controlled at 0.03mm, the speed is accurate to 0.1 mm/s; it is suitable for producing ultra precision products with higher repeated positioning accuracy; is can achieve stable precision molding formation.

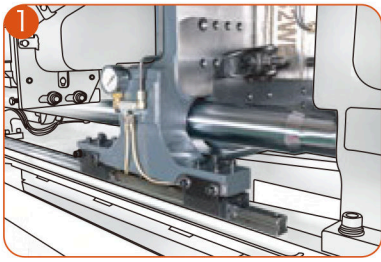
Ostalo / Others:

- Ekologija
Ušteda energije i zaštita životne sredine korišćenjem servo motora bez hidro ulja; potrošnja energije je smanjena za 50%-70%; Mast za režim protoka može podmazati pokretnu poziciju mašine, čime je izbegnuto prethodno zagađenje curenjem tečnog ulja; mehanički pogon je usvojio namenski kuglični vijak visoke čvrstoće i izolaciju sinhronog remena; motor radi tiho, što je smanjilo buku.
- Bezbednost
Osetljivost zaštite od buđi je visoka, što može da otkrije sitne prepreke i efikasno zaštititi buđ.
- Environmental
Conservation Energy saving and environmental protection servo motor driving without hydraulic oil; the energy consumption is reduced by 50%-70%; the flow regime grease can lubricate machinery movable position, which avoided former leakage pollution of liquid oiling; the mechanical drive adopted dedicated high strength ballscrew and synchronous belt isolation; the motor operates quietly, which reduced the noise.
- Safety
The sensitivity of mould protection is high, which can detect tiny obstacles and protect mould effectively.

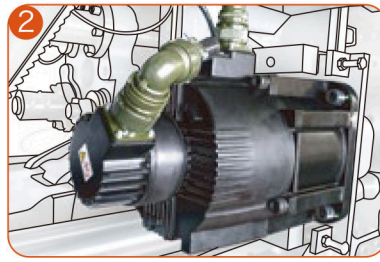
Primena proizvoda / Product application:

- Široko primenjivo u različitim oblastima industrije prerade plastike, ovo može odgovarati raznovrsnoj plastici i proizvodima.
- Primenljivo za proizvodnju plastičnih proizvoda u visokoj preciznosti i zahtevima.
- Widely applied to various fields of plastic processing industry, this can correspond to diversified plastic and products.
- Applicable for producing the plastic products in high precisions and requirements.

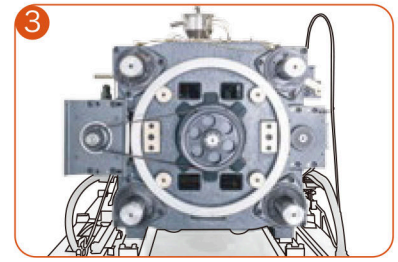
Delovi mašina / Machine parts



1 Zaključavanje u režimu visoke čvrstoće
High rigidity mode locking device



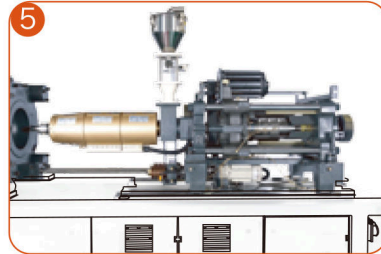
2 Servo motor brzog odziva i niske inercije
High-response and low-inertia servo motor



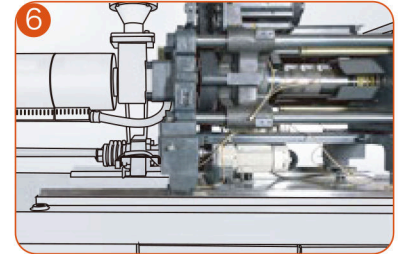
3 Sinhrona veza kaišem garantuje stabilni o.moment
Synchronous belt connection guaranteed stable torque



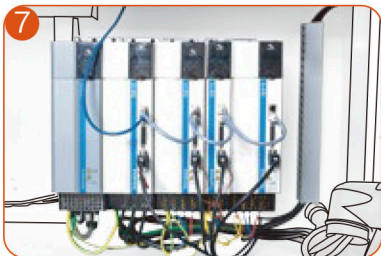
4 Ulaz sistema za podmazivanje
Import lubricating system



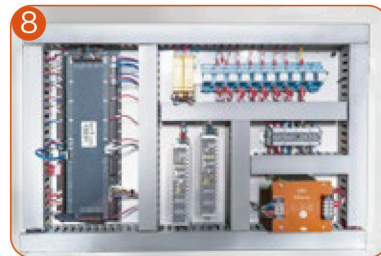
5 Štedljivi sistem IC zagrevanja
Energy-saving infrared heating



6 Usvojeni mehanizam velike nosivosti
Adopted heavy-bearing imported all screw



7 Najnoviji kombinovani upravljač
Newest combined driver

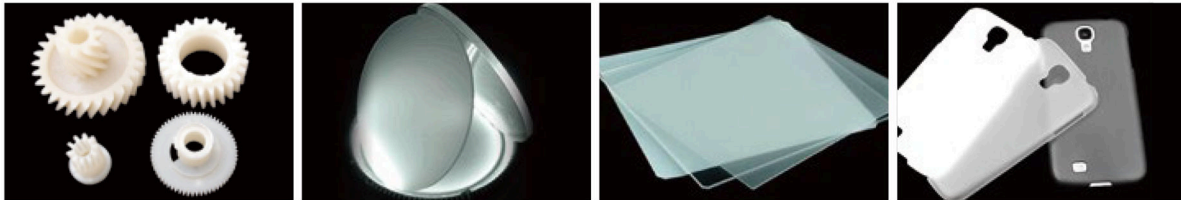


8 Uređen raspored unutar distributivne kutije
The layout inside the distribution box is in order



9 Komandno okruženje kompjutera
Computer operation interface

Primena mašina / Product application



Predstavljanje mašina za brizganje / Introduction of injection molding machine

longhua IE model je nezavisno istražena i razvijena potpuno električna mašina za brizganje; opremljena mehaničkom strukturom koja je pogodna za rad velike brzine i visoke preciznosti. Servo kontrolno kolo velike brzine kojim je opremljena dostupno je za industriju plastike koja sledi efikasne i visokotehnoške zahteve.

Integrirane su najnaprednije tehnologije pogona i prenosa, u kombinaciji sa obilnim specijalizovanim tehničkim zahtevima za oblikovanje, obuhvata jednostavan i pogodan humanizovan dizajn koncept, usvojene su modernizovane tehnologije digitalne obrade i poseduju odlična svojstva kao što su: ušteda energije, zaštita životne sredine, velika brzina, efikasna, precizna kontrola, pouzdan i praktičan rad, što je u velikoj meri zadovoljilo različite zahteve kupaca za stabilnost mašine, efikasnost proizvodnje i svojstva zaštite životne sredine.

Uređaj se široko primenjuje u različitim oblastima industrije prerade plastike, uključujući proizvode električne opreme, fotoelektrične digitalne proizvode, automobilske dodatke i proizvode za vazduhoplovstvo, medicinski tretman i pakovanje hrane, kozmetičku ambalažu, plastične igračke, sportske instrumente, optiku itd.

Yonghua YE model is an independently researched and developed full-electric injection molding machine; it is equipped with the mechanical structure that is suitable for high speed and high precision operation. The high-speed servo control circuit it equipped is available for the plastic industry pursuing efficient and high-tech requirements.

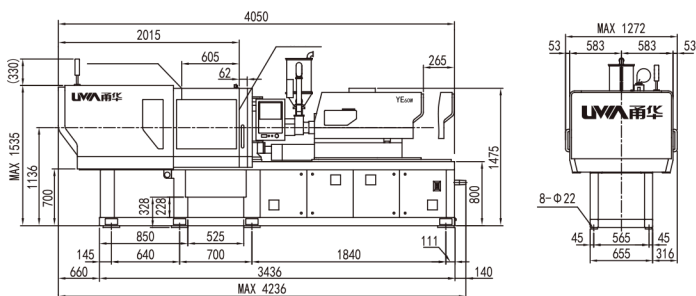
It integrated the most advanced drive and transmission technology, combined with abundant specialized technical demands of molding, blended simple and convenient humanized design concept, adopted modernized digital processing technology, and equipped with the excellent properties such as energy saving, environmental protection, high speed, efficient, precise control, reliable operation and convenient operation, which greatly satisfied customers various demands for machine stability, production efficiency and environmental protection property.

The device is widely applied to various fields of plastic processing industry, including electric equipment products, photoelectric digital products, automobile accessory and aviation product, medical treatment and food packaging, cosmetic packaging, plastic toy, sports leisure instrument, and optics etc.

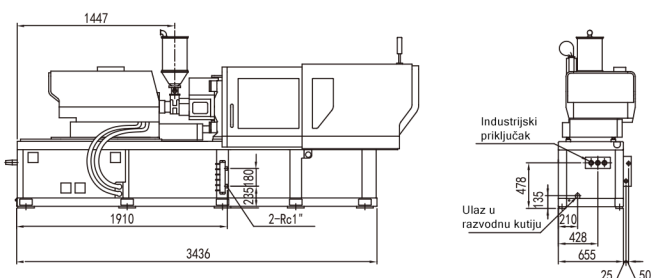
Specifikacije	Specification	80VE/80V			150VE/150V			
Jedinica za brizganje	Injection Unit	A	B	C	A	B	C	
Prečnik puža	Screw diameter	[mm]	20	22	26	26	28	32
Odnos puža L/D	Screw L/D ratio	[L/D]	20	20	18	21	21	19
Zapremina šneke	Cylinder head volume	[cm ³]	28	34	47	58	67	88
Gramaza šneke	Shot weight	[g]	25	31	43	53	61	80
Pritisak brizganja	Injection pressure	[Mpa]	270	223	160	255	220	168
Masa brizganja	Injection rate	[g/s]	57/100	69/121	97/169	97/169	112/196	146/256
Brzina brizganja	Shot speed	[mm/s]	200/350			200/350		
Hod brizganja	Injection stroke	[mm]	90			110		
Brzina puža	Screw speed	[rpm]	400			400		
Sila dodira dizne	Nozzle touch force	[KN]	14.8			14.8		
Prečnik sfere dizne	Sphere diameter of nozzle	[mm]	SR10			SR10		
Stejna jedinica	Clamping Unit							
Sila zatvaranja	Clamping force	[KN]	600					
Max. hod otvaranja	Max.mould opening stroke	[mm]	270					
Razmak između kolona	Space between tie bars	[mm]	370 x 320					
Min. veličina kalupa	Min.Mould size	[mm]	240 x 205					
Min. debljina kalupa	Min.Mould height	[mm]	150					
Max. debljina kalupa	Max.Mould height	[mm]	370					
Prečnik otvora lokacije kalupa	Dia of mould location hole	[mm]	Φ100H7					
Hod izbacivača	Ejector stroke	[mm]	70					
Sila izbacivanja	Ejector force	[KN]	20					
Broj izbacivača	Ejectors number	[PIECE]	5					
Ostalo	Others							
Snaga motora	Motor power	[Kw]	8.9/9.5			11.8/11		
Snaga grejanja	Heating power	[Kw]	5.25			7.95		
Sekcija grejanja	Heating section		3+3			3+3		
Dimenzije mašine	Machine dimension	[m]	4.25 x 1.3 x 1.54			4.25 x 1.3 x 1.54		
Težina mašine	Machine weight	[t]	3.3			3.5		

Pažnja: Naša kompanija zadržava prava izmene modela, parametara, specifikacija, konfiguracije i boje bez prethodnog obaveštavanja.
 Attention: Our company reserves the right of changing model, parameter, specification, configuration and color without prior notice.

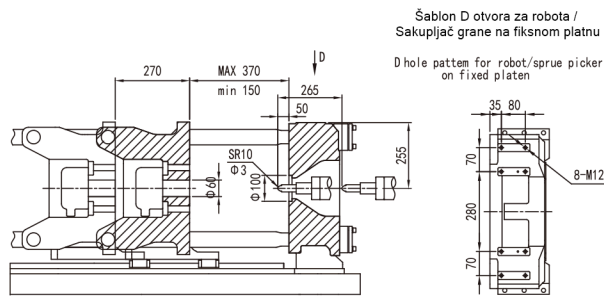
Spoljne dimenzije / Dimension Of Exterior



Distribucija rashladne tečnosti, priključci, industrijski priključak, pozicija, veličina
 Cooling water distribution box, distribution box into the ine hole, industrial socket / Position Size

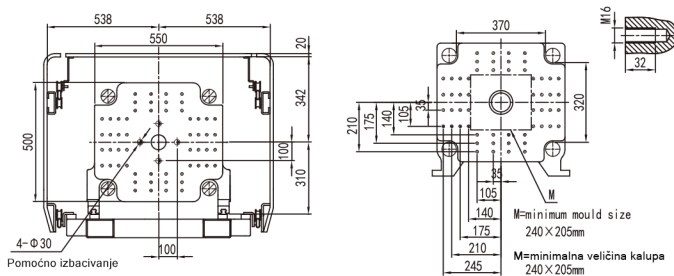


Dimenzije šablona / Dimension Of Templet



Pokretna površina
Movable platen

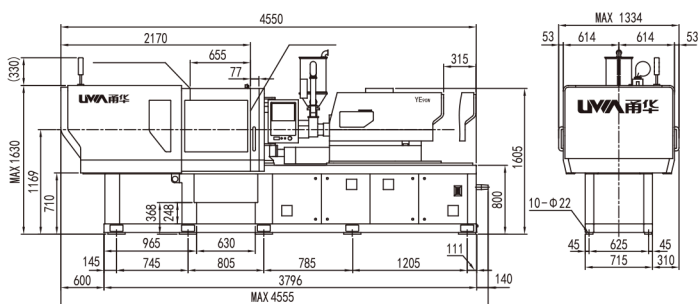
Fiksirana površina
Fixed platen



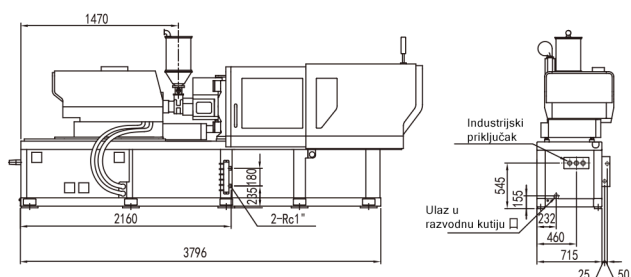
Specifikacije	Specification		80VE/80V			150VE/150V			200VE/200V		
Jedinica za brizganje	Injection Unit	单位	A	B	C	A	B	C	A	B	C
Prečnik puža	Screw diameter	[mm]	20	22	26	26	28	32	28	32	36
Odnos puža L/D	Screw L/D ratio	[L/D]	20	20	18	21	21	19	22	21	18.7
Zapremina šneke	Cylinder head volume	[cm ³]	28	34	47	58	67	88	77	100	127
Gramaza šneke	Shot weight	[g]	25	31	43	53	61	80	70	91	116
Pritisak brizganja	Injection pressure	[Mpa]	270	223	160	255	220	168	261	200	158
Masa brizganja	Injection rate	[g/s]	57/100	69/121	97/169	97/169	112/196	146/256	112/196	146/256	185/324
Brzina brizganja	Shot speed	[mm/s]	200/350			200/350			200/350		
Hod brizganja	Injection stroke	[mm]	90			110			125		
Brzina puža	Screw speed	[rpm]	400			400			400		
Sila dodira dizne	Nozzle touch force	[KN]	14.8			14.8			19.7		
Prečnik sfere dizne	Sphere diameter of nozzle	[mm]	SR10			SR10			SR10		
Stežna jedinica	Clamping Unit										
Sila zatvaranja	Clamping force	[KN]	900								
Max. hod otvaranja	Max.mould opening stroke	[mm]	320								
Razmak između kolona	Space between tie bars	[mm]	420 x 370								
Min. veličina kalupa	Min.Mould size	[mm]	270 x 240								
Min. debljina kalupa	Min.Mould height	[mm]	150								
Max. debljina kalupa	Max.Mould height	[mm]	420								
Prečnik otvora lokacije kalupa	Dia of mould location hole	[mm]	Φ100H7								
Hod izbacivača	Ejector stroke	[mm]	80								
Sila izbacivanja	Ejector force	[KN]	31.4								
Broj izbacivača	Ejector number	[PIECE]	5								
Ostalo	Others										
Snaga motora	Motor power	[Kw]	8.9/9.5			11.8/11			14.5/15		
Snaga grejanja	Heating power	[Kw]	5.25			7.95			9.25		
Sekcija grejanja	Heating section		3+3			3+3			3+3		
Dimenzije mašine	Machine dimension	[m]	4.56 x 1.34 x 1.63			4.56 x 1.34 x 1.63			4.68 x 1.34 x 1.63		
Težina mašine	Machine weight	[t]	3.8			4.0			4.2		

Pažnja: Naša kompanija zadržava prava izmene modela, parametara, specifikacija, konfiguracije i boje bez prethodnog obaveštavanja.
Attention: Our company reserves the right of changing model, parameter, specification, configuration and color without prior notice.

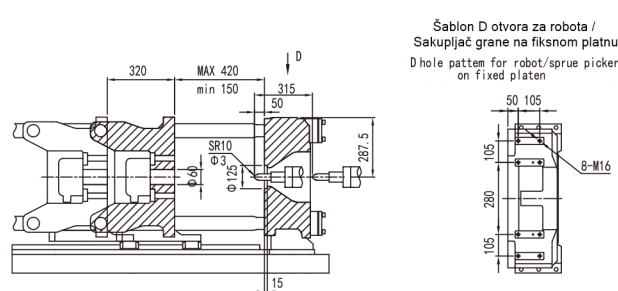
Spoljne dimenzije / Dimension Of Exterior



Distribucija rashladne tečnosti, priključci, industrijski priključak, pozicija, veličina
 Cooling water distribution box, distribution box into the in hole, industrial socket / Position Size

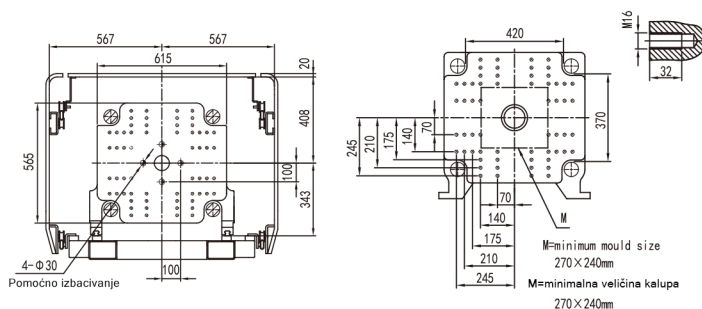


Dimenzije šablona / Dimension Of Templet



Pokretna površina
Movable platen

Fiksirana površina
Fixed platen



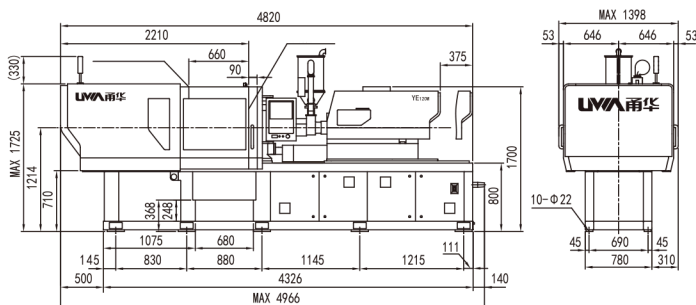
TEHNIČKI PODACI / TECHNICAL DATA

YE120W

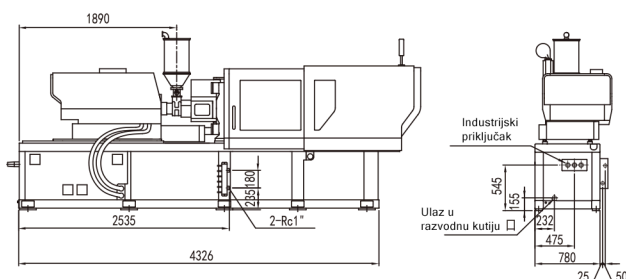
Specifikacije	Specification		150VE/150V			200VE/200V			300VE/300V		
Jedinica za brizganje	Injection Unit	单位	A	B	C	A	B	C	A	B	C
Prečnik puža	Screw diameter	[mm]	26	28	32	28	32	36	32	36	40
Odnos puža L/D	Screw L/D ratio	[L/D]	21	21	19	22	21	18.7	23.6	21	19
Zapremina šneke	Cylinder head volume	[cm ³]	58	67	88	77	100	127	116	147	182
Gramaza šneke	Shot weight	[g]	53	61	80	70	91	116	106	134	166
Pritisak brizganja	Injection pressure	[Mpa]	255	220	168	261	200	158	253	200	162
Masa brizganja	Injection rate	[g/s]	97/169	112/196	146/256	112/196	146/256	185/324	146/256	185/324	229/400
Brzina brizganja	Shot speed	[mm/s]	200/350			200/350			200/350		
Hod brizganja	Injection stroke	[mm]	110			125			145		
Brzina puža	Screw speed	[rpm]	400			400			400		
Sila dodira dizne	Nozzle touch force	[KN]	14.8			19.7			19.7		
Prečnik sfere dizne	Sphere diameter of nozzle	[mm]	SR10			SR10			SR10		
Stejna jedinica	Clamping Unit										
Sila zatvaranja	Clamping force	[KN]	1200								
Max. hod otvaranja	Max.mould opening stroke	[mm]	360								
Razmak između kolona	Space between tie bars	[mm]	470 x 420								
Min. veličina kalupa	Min.Mould size	[mm]	305 x 270								
Min. debljina kalupa	Min.Mould height	[mm]	180								
Max. debljina kalupa	Max.Mould height	[mm]	480								
Prečnik otvora lokacije kalupa	Dia of mould location hole	[mm]	Φ125H7								
Hod izbacivača	Ejector stroke	[mm]	100								
Sila izbacivanja	Ejector force	[KN]	31.4								
Broj izbacivača	Ejector number	[PIECE]	5								
Ostalo	Others										
Snaga motora	Motor power	[Kw]	13/13			15/15			23.6/22		
Snaga grejanja	Heating power	[Kw]	7.95			9.25			13		
Sekcija grejanja	Heating section		3+3			3+3			3+3		
Dimenzije mašine	Machine dimension	[m]	4.97 x 1.4 x 1.73			4.97 x 1.4 x 1.73			5.12 x 1.4 x 1.73		
Težina mašine	Machine weight	[t]	4.2			4.4			4.7		

Pažnja: Naša kompanija zadržava prava izmene modela, parametara, specifikacija, konfiguracije i boje bez prethodnog obaveštavanja.
Attention: Our company reserves the right of changing model, parameter, specification, configuration and color without prior notice.

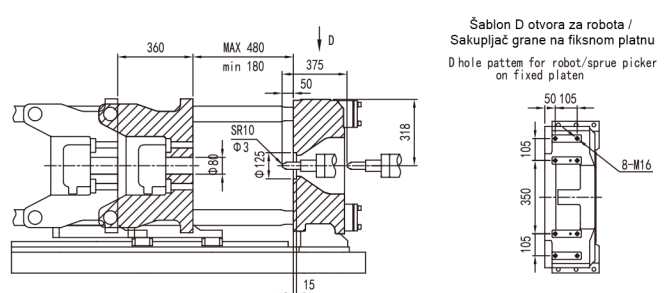
Spoljne dimenzije / Dimension Of Exterior



Distribucija rashladne tečnosti, priključci, industrijski priključak, pozicija, veličina
 Cooling water distribution box, distribution box into the ine hole, industrial socket / Position Size

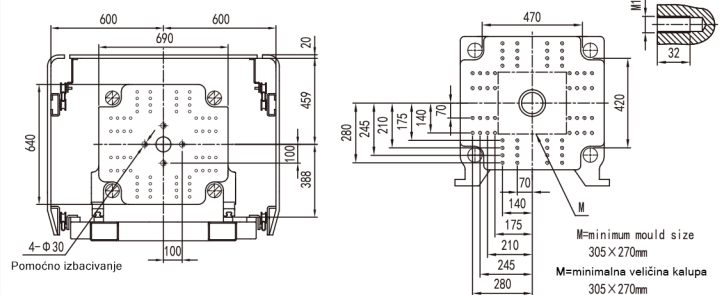


Dimenzije šablona / Dimension Of Templet



Pokretna površina
Movable platen

Fiksirana površina
Fixed platen



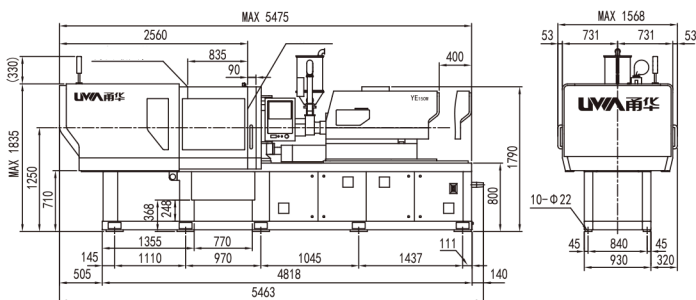
TEHNIČKI PODACI / TECHNICAL DATA

YE150W

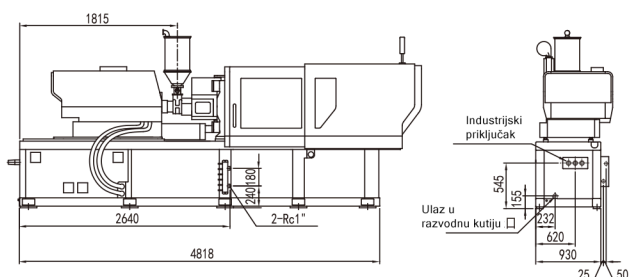
Specifikacije	Specification		200VE/200V			300VE/300V			430VE/430V		
Jedinica za brizganje	Injection Unit	単位	A	B	C	A	B	C	A	B	C
Prečnik puža	Screw diameter	[mm]	28	32	36	32	36	40	36	40	45
Odnos puža L/D	Screw L/D ratio	[L/D]	22	21	18.7	23.6	21	19	23.3	21	19
Zapremina šneke	Cylinder head volume	[cm ³]	77	100	127	116	147	182	173	213	270
Gramaza šneke	Shot weight	[g]	70	91	116	106	134	166	157	194	246
Pritisak brizganja	Injection pressure	[Mpa]	261	200	158	253	200	162	247	200	158
Masa brizganja	Injection rate	[g/s]	112/196	146/256	185/324	146/256	185/324	229/400	185/324	229/400	290/507
Brzina brizganja	Shot speed	[mm/s]	200/350			200/350			200/350		
Hod brizganja	Injection stroke	[mm]	125			145			170		
Brzina puža	Screw speed	[rpm]	400			400			400		
Sila dodira dizne	Nozzle touch force	[KN]	19.7			19.7			19.7		
Prečnik sfere dizne	Sphere diameter of nozzle	[mm]	SR10			SR10			SR10		
Stejna jedinica	Clamping Unit										
Sila zatvaranja	Clamping force	[KN]	1500								
Max. hod otvaranja	Max.mould opening stroke	[mm]	420								
Razmak između kolona	Space between tie bars	[mm]	530 x 470								
Min. veličina kalupa	Min.Mould size	[mm]	335 x 305								
Min. debljina kalupa	Min.Mould height	[mm]	200								
Max. debljina kalupa	Max.Mould height	[mm]	520								
Prečnik otvora lokacije kalupa	Dia of mould location hole	[mm]	Φ125H7								
Hod izbacivača	Ejector stroke	[mm]	120								
Sila izbacivanja	Ejector force	[KN]	32.4								
Broj izbacivača	Ejector number	[PIECE]	5								
Ostalo	Others										
Snaga motora	Motor power	[Kw]	19.3/19.3			23.6/22			25.2/30		
Snaga grejanja	Heating power	[Kw]	9.25			13			14.2		
Sekcija grejanja	Heating section		3+3			3+3			3+3		
Dimenzije mašine	Machine dimension	[m]	5.47 x 1.7 x 1.84			5.48 x 1.7 x 1.84			5.68 x 1.7 x 1.84		
Težina mašine	Machine weight	[t]	6.3			6.5			6.8		

Pažnja: Naša kompanija zadržava prava izmene modela, parametara, specifikacija, konfiguracije i boje bez prethodnog obaveštavanja.
Attention: Our company reserves the right of changing model, parameter, specification, configuration and color without prior notice.

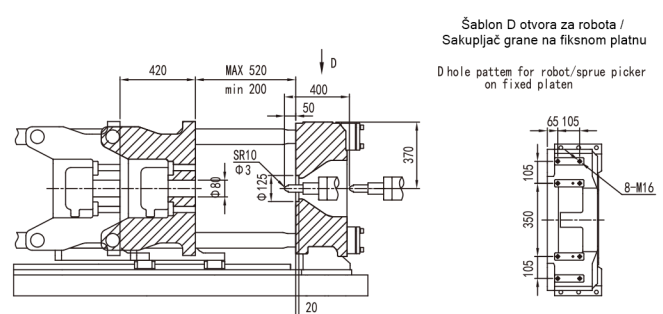
Spoljne dimenzije / Dimension Of Exterior



Distribucija rashladne tečnosti, priključci, industrijski priključak, pozicija, veličina
 Cooling water distribution box, distribution box into the ine hole, industrial socket / Position Size

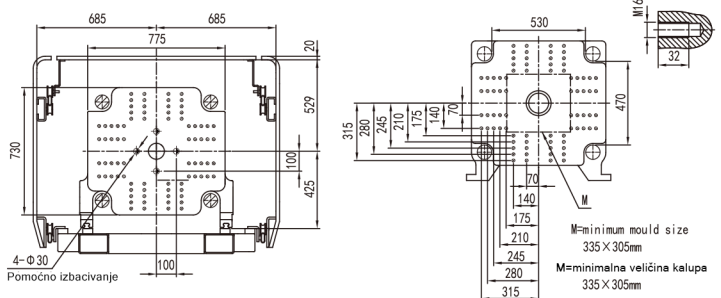


Dimenzije šablona / Dimension Of Templet



Pokretna površina
Movable platen

Fiksirana površina
Fixed platen



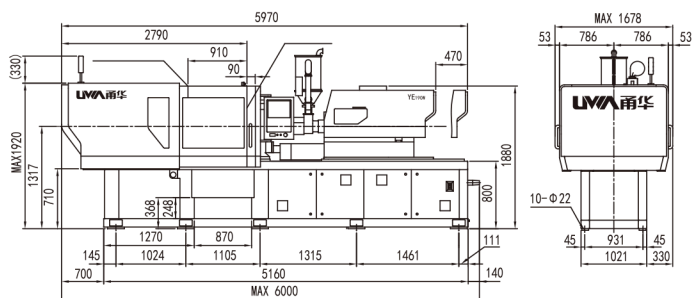
TEHNIČKI PODACI / TECHNICAL DATA

YE190W

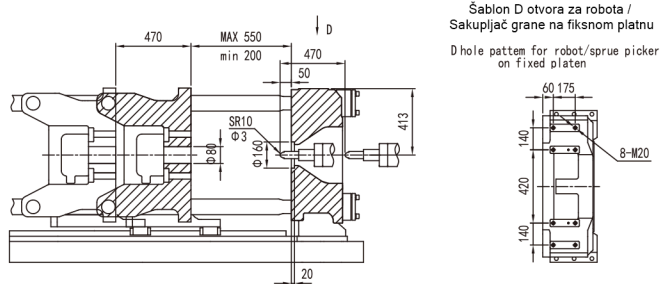
Specifikacije	Specification		300VE/300V			430VE/430V			640VE/640V		
Jedinica za brizganje	Injection Unit	単位	A	B	C	A	B	C	A	B	C
Prečnik puža	Screw diameter	[mm]	32	36	40	36	40	45	40	45	50
Odnos puža L/D	Screw L/D ratio	[L/D]	23.6	21	19	23.3	21	19	23.5	21	19
Zapremina šneke	Cylinder head volume	[cm ³]	116	147	182	173	213	270	252	319	395
Gramaza šneke	Shot weight	[g]	106	134	166	157	194	246	229	290	358
Pritisak brizganja	Injection pressure	[Mpa]	253	200	162	247	200	158	253	200	162
Masa brizganja	Injection rate	[g/s]	146/256	185/324	229/400	185/324	229/400	290/507	183/343	231/434	286/536
Brzina brizganja	Shot speed	[mm/s]	200/350			200/350			160/300		
Hod brizganja	Injection stroke	[mm]	145			170			200		
Brzina puža	Screw speed	[rpm]	400			400			350		
Sila dodira dizne	Nozzle touch force	[KN]	19.7			19.7			39.3		
Prečnik sfere dizne	Sphere diameter of nozzle	[mm]	SR10			SR10			SR10		
Stežna jedinica	Clamping Unit										
Sila zatvaranja	Clamping force	[KN]	1900								
Max. hod otvaranja	Max.mould opening stroke	[mm]	470								
Razmak između kolona	Space between tie bars	[mm]	590 x 530								
Min. veličina kalupa	Min.Mould size	[mm]	355 x 335								
Min. debljina kalupa	Min.Mould height	[mm]	200								
Max. debljina kalupa	Max.Mould height	[mm]	550								
Prečnik otvora lokacije kalupa	Dia of mould location hole	[mm]	Φ160H7								
Hod izbacivača	Ejector stroke	[mm]	130								
Sila izbacivanja	Ejector force	[KN]	44.1								
Broj izbacivača	Ejector number	[PIECE]	5								
Ostalo	Others										
Snaga motora	Motor power	[Kw]	23.6/23.4			27.9/30			29/30		
Snaga grejanja	Heating power	[Kw]	13			14.2			16.6		
Sekcija grejanja	Heating section		3+3			3+3			3+3		
Dimenzije mašine	Machine dimension	[m]	6.0 x 1.68 x 1.92			6.0 x 1.68 x 1.92			6.25 x 1.68 x 1.92		
Težina mašine	Machine weight	[t]	8.1			8.2			8.6		

Pažnja: Naša kompanija zadržava prava izmene modela, parametara, specifikacija, konfiguracije i boje bez prethodnog obaveštavanja.
Attention: Our company reserves the right of changing model, parameter, specification, configuration and color without prior notice.

Spoljne dimenzije / Dimension Of Exterior

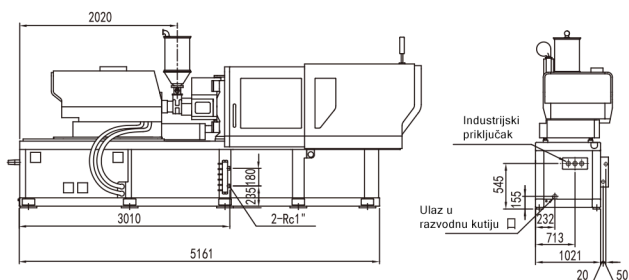


Dimenzije šablona / Dimension Of Templet



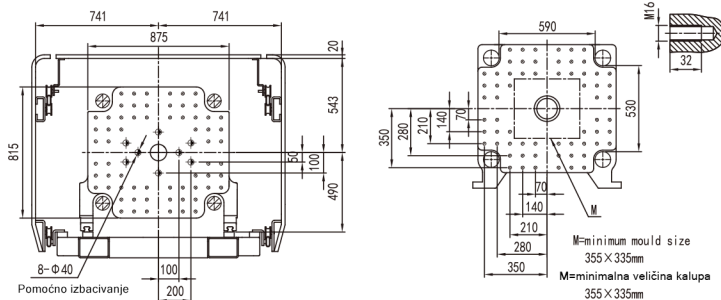
Šablon D otvora za robota /
 Sakupljač grane na fiksnoj platnu
 D hole patten for robot/sprue picker
 on fixed platen

Distribucija rashladne tečnosti, priključci, industrijski priključak, pozicija, veličina
 Cooling water distribution box, distribution box into the ine hole, industrial
 socket / Position Size



Pokretna površina
 Movable platen

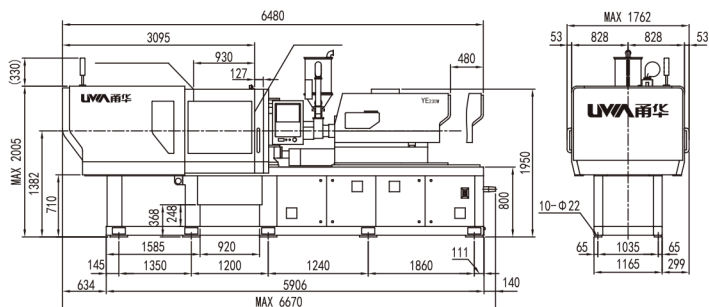
Fiksirana površina
 Fixed platen



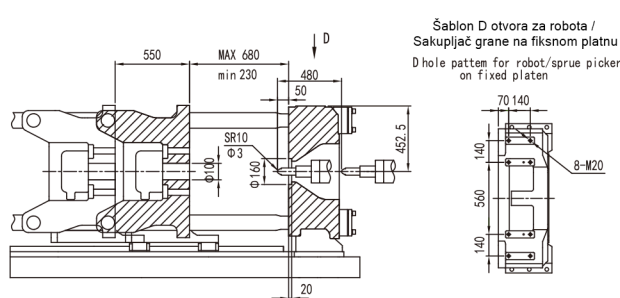
Specifikacije	Specification		430VE/430V			640VE/640V			850VE/850V		
Jedinica za brizganje	Injection Unit	単位	A	B	C	A	B	C	A	B	C
Prečnik puža	Screw diameter	[mm]	36	40	45	40	45	50	45	50	55
Odnos puža L/D	Screw L/D ratio	[L/D]	23.3	21	19	23.5	21	19	23.2	21	19
Zapremina šneke	Cylinder head volume	[cm ³]	173	213	270	252	319	395	342	422	511
Gramaza šneke	Shot weight	[g]	157	194	246	229	290	358	311	384	465
Pritisak brizganja	Injection pressure	[Mpa]	247	200	158	253	200	162	247	200	165
Masa brizganja	Injection rate	[g/s]	185/324	229/400	290/507	183/343	231/434	286/536	231/434	286/536	346/649
Brzina brizganja	Shot speed	[mm/s]	200/350			160/300			160/300		
Hod brizganja	Injection stroke	[mm]	170			200			215		
Brzina puža	Screw speed	[rpm]	400			350			350		
Sila dodira dizne	Nozzle touch force	[KN]	19.7			39.3			39.3		
Prečnik sfere dizne	Sphere diameter of nozzle	[mm]	SR10			SR10			SR10		
Stejna jedinica	Clamping Unit										
Sila zatvaranja	Clamping force	[KN]	2300								
Max. hod otvaranja	Max.mould opening stroke	[mm]	550								
Razmak između kolona	Space between tie bars	[mm]	650 x 590								
Min. veličina kalupa	Min.Mould size	[mm]	425 x 385								
Min. debljina kalupa	Min.Mould height	[mm]	230								
Max. debljina kalupa	Max.Mould height	[mm]	680								
Prečnik otvora lokacije kalupa	Dia of mould location hole	[mm]	Φ160H7								
Hod izbacivača	Ejector stroke	[mm]	150								
Sila izbacivanja	Ejector force	[KN]	44.1								
Broj izbacivača	Ejector number	[PIECE]	13								
Ostalo	Others										
Snaga motora	Motor power	[Kw]	33.9/33.9			35/35			36.9/41		
Snaga grejanja	Heating power	[Kw]	14.2			16.6			20.2		
Sekcija grejanja	Heating section		3+3			3+3			4+3		
Dimenzije mašine	Machine dimension	[m]	6.67 x 1.77 x 2.01			6.67 x 1.77 x 2.01			6.81 x 1.77 x 2.01		
Težina mašine	Machine weight	[t]	11.1			11.5			11.9		

Pažnja: Naša kompanija zadržava prava izmene modela, parametara, specifikacija, konfiguracije i boje bez prethodnog obaveštavanja.
Attention: Our company reserves the right of changing model, parameter, specification, configuration and color without prior notice.

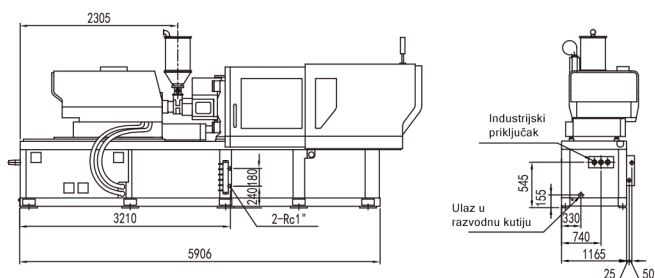
Spoljne dimenzije / Dimension Of Exterior



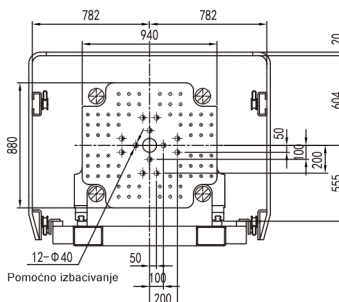
Dimenzije šablona / Dimension Of Templet



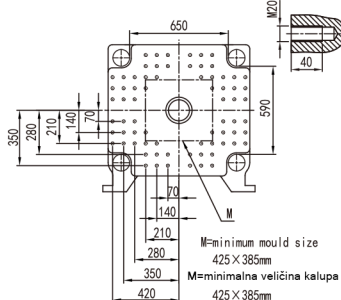
Distribucija rashladne tečnosti, priključci, industrijski priključak, pozicija, veličina
 Cooling water distribution box, distribution box into the ine hole, industrial socket / Position Size



Pokretna površina
 Movable platen



Fiksirana površina
 Fixed platen



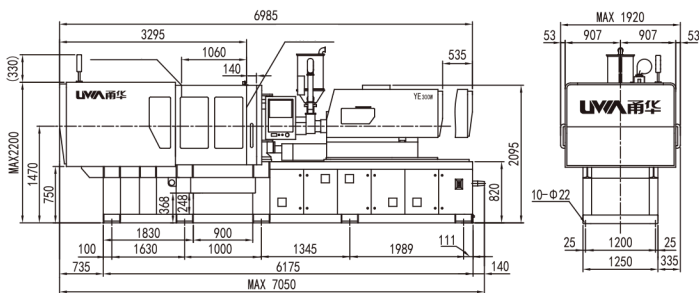
TEHNIČKI PODACI / TECHNICAL DATA

YE300W

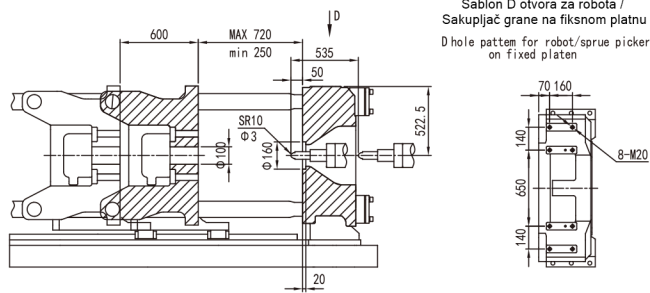
Specifikacije	Specification		640VE/640V			850VE/850V			1100VE/1100V		
Jedinica za brizganje	Injection Unit	単位	A	B	C	A	B	C	A	B	C
Prečnik puža	Screw diameter	[mm]	40	45	50	45	50	55	50	55	60
Odnos puža L/D	Screw L/D ratio	[L/D]	23.5	21	19	23.2	21	19	23.1	21	19.3
Zapremina šneke	Cylinder head volume	[cm ³]	252	319	395	342	422	511	471	570	678
Gramaza šneke	Shot weight	[g]	229	290	358	311	384	465	428	518	617
Pritisak brizganja	Injection pressure	[Mpa]	253	200	162	247	200	165	236	195	164
Masa brizganja	Injection rate	[g/s]	183/343	231/434	286/536	231/434	286/536	346/649	286/447	346/541	412/643
Brzina brizganja	Shot speed	[mm/s]	160/300			160/300			160/250		
Hod brizganja	Injection stroke	[mm]	200			215			240		
Brzina puža	Screw speed	[rpm]	350			350			320		
Sila dodira dizne	Nozzle touch force	[KN]	39.3			39.3			54		
Prečnik sfere dizne	Sphere diameter of nozzle	[mm]	SR10			SR10			SR10		
Stejna jedinica	Clamping Unit										
Sila zatvaranja	Clamping force	[KN]	3000								
Max. hod otvaranja	Max.mould opening stroke	[mm]	600								
Razmak između kolona	Space between tie bars	[mm]	730 x 730								
Min. veličina kalupa	Min.Mould size	[mm]	470 x 470								
Min. debljina kalupa	Min.Mould height	[mm]	250								
Max. debljina kalupa	Max.Mould height	[mm]	720								
Prečnik otvora lokacije kalupa	Dia of mould location hole	[mm]	Φ160H7								
Hod izbacivača	Ejector stroke	[mm]	150								
Sila izbacivanja	Ejector force	[KN]	59								
Broj izbacivača	Ejector number	[PIECE]	13								
Ostalo	Others										
Snaga motora	Motor power	[Kw]	38.1/38.1			40/44.1			47.2/47.2		
Snaga grejanja	Heating power	[Kw]	16.6			20.2			26.8		
Sekcija grejanja	Heating section		3+3			4+3			4+3		
Dimenzije mašine	Machine dimension	[m]	7.05 x 1.92 x 2.2			7.05 x 1.92 x 2.2			7.35 x 1.92 x 2.2		
Težina mašine	Machine weight	[t]	14			14.5			15.3		

Pažnja: Naša kompanija zadržava prava izmene modela, parametara, specifikacija, konfiguracije i boje bez prethodnog obaveštavanja.
 Attention: Our company reserves the right of changing model, parameter, specification, configuration and color without prior notice.

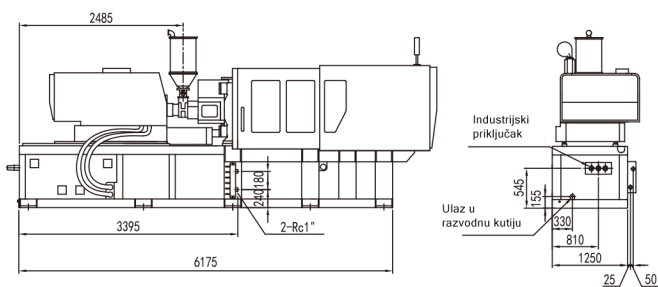
Spoljne dimenzije / Dimension Of Exterior



Dimenzije šablona / Dimension Of Templet

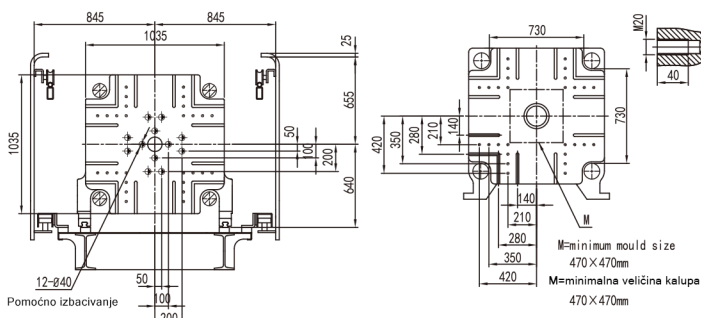


Distribucija rashladne tečnosti, priključci, industrijski priključak, pozicija, veličina
 Cooling water distribution box, distribution box into the ine hole, industrial socket / Position Size



Pokretna površina
 Movable platen

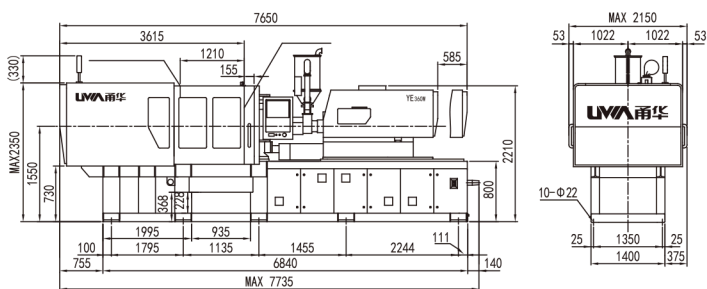
Fiksirana površina
 Fixed platen



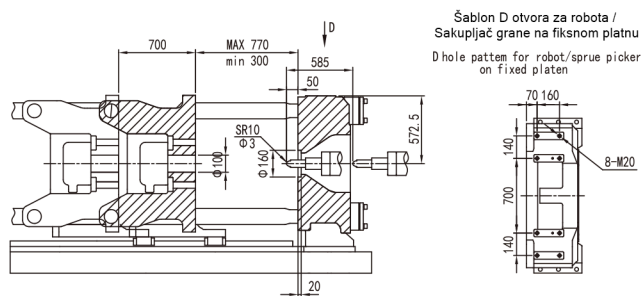
Specifikacije	Specification		850VE/850V			1100VE/1100V		
Jedinica za brizganje	Injection Unit	単位	A	B	C	A	B	C
Prečnik puža	Screw diameter	[mm]	45	50	55	50	55	60
Odnos puža L/D	Screw L/D ratio	[L/D]	23.2	21	19	23.1	21	19.3
Zapremina šneke	Cylinder head volume	[cm ³]	342	422	511	471	570	678
Gramaza šneke	Shot weight	[g]	311	384	465	428	518	617
Pritisak brizganja	Injection pressure	[Mpa]	247	200	165	236	195	164
Masa brizganja	Injection rate	[g/s]	231/434	286/536	346/649	286/447	346/541	412/643
Brzina brizganja	Shot speed	[mm/s]	160/300			160/250		
Hod brizganja	Injection stroke	[mm]	215			240		
Brzina puža	Screw speed	[rpm]	350			320		
Sila dodira dizne	Nozzle touch force	[KN]	39.3			54		
Prečnik sfere dizne	Sphere diameter of nozzle	[mm]	SR10			SR10		
Stejna jedinica	Clamping Unit							
Sila zatvaranja	Clamping force	[KN]	3600					
Max. hod otvaranja	Max.mould opening stroke	[mm]	700					
Razmak između kolona	Space between tie bars	[mm]	820 x 820					
Min. veličina kalupa	Min.Mould size	[mm]	540 x 540					
Min. debljina kalupa	Min.Mould height	[mm]	300					
Max. debljina kalupa	Max.Mould height	[mm]	770					
Prečnik otvora lokacije kalupa	Dia of mould location hole	[mm]	Φ160H7					
Hod izbacivača	Ejector stroke	[mm]	160					
Sila izbacivanja	Ejector force	[KN]	59					
Broj izbacivača	Ejector number	[PIECE]	17					
Ostalo	Others							
Snaga motora	Motor power	[Kw]	43.1/ 47.2			47.2/50.3		
Snaga grejanja	Heating power	[Kw]	20.2			26.8		
Sekcija grejanja	Heating section		4+3			4+3		
Dimenzije mašine	Machine dimension	[m]	7.65 x 2.15 x 2.35			7.65 x 2.15 x 2.35		
Težina mašine	Machine weight	[t]	17.8			18.3		

Pažnja: Naša kompanija zadržava prava izmene modela, parametara, specifikacija, konfiguracije i boje bez prethodnog obaveštavanja.
Attention: Our company reserves the right of changing model, parameter, specification, configuration and color without prior notice.

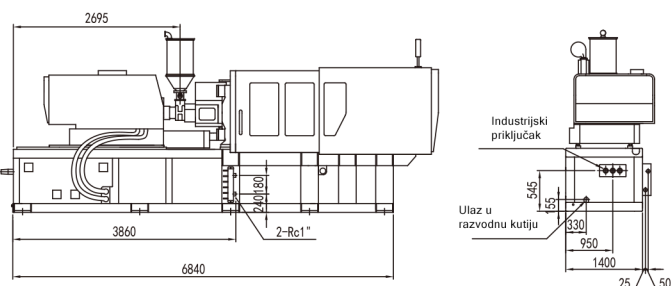
Spoljne dimenzije / Dimension Of Exterior



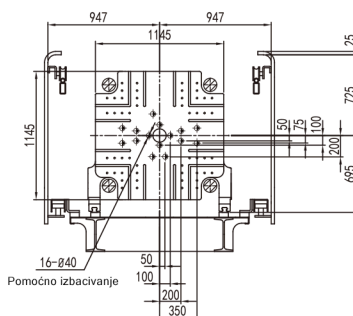
Dimenzije šablona / Dimension Of Templet



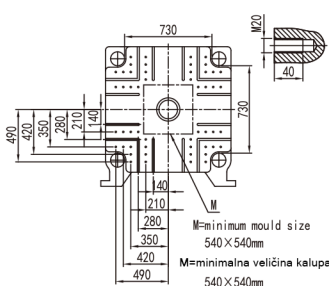
Distribucija rashladne tečnosti, priključci, industrijski priključak, pozicija, veličina
 Cooling water distribution box, distribution box into the inle hole, industrial socket / Position Size



Pokretna površina
 Movable platen



Fiksirana površina
 Fixed platen



Osnovna lista opreme

Main Equipment List

Stezna jedinica	Clamping unit	Jedinica za brizganje	Injection unit
Kosi prekidač u pet tačaka	Five point oblique toggle	Bimetalno bure i kaljeni vijak	Bimetallic barrel and hardened screw
Pomeranje stezaljke preko puža i remenskog pogona	Clamp movement via screw and belt drive	Omotač bureta od perforiranog metala	Barrel cover with perforated metal
6 podesivih brzina otvaranja i zatvaranja	6 adjustable open and close speeds	Kretanje brizgaljke pogonjeno prenosnim kaišem i vratilom	Injection movement via ball screw and belt drive
Podesiva sila zatvaranja	Clamping force adjustable	10 stepena podešavanja brzine brizganja	10 Stages injection movement speed adjustable
Automatsko podešavanje visine kalupa	Automatic mold height adjustmens	5 stepeni podešavanja držanja pritiska	5 Stages pressure holding adjustable
Pozicioniranje pritiska, kontrola brzine i sile	Pressure positioning, speed and force control	3 stepena brzine rotacije i povratnog pritiska podesivi u platiciranju	3 Stages rotate speed and back pressure adjustable in platicizing
Visoko osetljiva dvostepena zaštita kalupa	High sensitivity mold protection with two stages	Displej brzine rotacije puža	Screw rotate speed display
Automatsko podmazivanje	Automatic lubrication	Povratni vod	Screw suckback and pre-suckback
Linearna vodica za pokretnu ploču	Linear guide for moving platen	Zaštita vratila od hladnog starta	Screw cold start protection
Otvaranje kalupa u vreme hlađenja	Open mold during cooling	Automatsko pražnjenje	Auto purge
Otvaranje kalupa u vreme punjenja	Open mold during charging	Brizganje pod pritiskom	Compress injection
		Rezervoar sa kontrolom temperature	Hopper with temperature control
		Klizna vrata rezervoara	Slide hopper loader
		Sigurnosna zaštita brizganja	Injection safety protection
		Odlaganje brizganja	Injection delay
		Odlaganje punjenja	Charge delay
		6 VP izbor moda prenosa	6 VP transfer mode selection
		Podesiva sila kontakta ventila	Nozzle contact force adjustable
		Automatsko zagrevanje u startu i isključenju	Automatic heating start and shutdown
		Detektor grešaka zone grejanja i termoelementa	Heating zone and thermocouple failure detection
Kontroler	Controller	Izbacivač	Ejector
PLC sistem visokih performansi	High performance PLC system	Zaštita obrtnog momenta izbacivača	Ejector torque protection
15 inčni kolor LCD sa kapacitivnim tač sistemom	15 inch full color LCD with capacitive touch	Podesiva pozicija krajnje tačke izbacivača	Ejector back end position adjustable
Različiti interfejsi za eksterne uređaji, kao što su ethernet, USB, HDMI, CAN	Various interface for external devices, like ethernet, USB, HDMI, CAN	Odlaganje početka izbacivanja	Ejector forward delay
USB skladište podataka	USB storage	Zadržavanje izbacivanja	Ejector holding
Tastatura sa ograničenjima i savetima	Keypad with limitation, and tips	Izbor moda podešavanja kalupa	Mold setting mode available
10000 linija za alarme i izveštaje o radu	10000 lines of alarms and operation log	Izbacivanje u toku otvaranja kalupa	Ejector during mold opening
10000 grupa za podatke o proizvodu	10000 groups product data records		
10000 izveštaja snimljenih u datoteke	10000 process data files saved		
Više jezika	Multi - language		
Daljinska dijagnostika, nadogradnja softvera, tehnička podrška	Remote diagnostics, software upgrade, technical supports		
Skrinšot i snimanje	Print screen and save		
Provera i status ulaza/izlaza	I/O check and status		
Kriterijumi kvaliteta i statistika, kriva kvaliteta	Quality criteria and statistics, the quality curve		
Rukovanje lošim odlivcima	Quality exception handing		
Upravljanje proizvodnjom	Production management		
Kontrolna kriva sile zatvaranja	Clamp force curve monitor		
Tajmer livenja	Molding timer		
Displej sa trenutnom temperaturom rezervoara	Hopper actual temperature display		

Opcije konfigurisanja mašine

Machine Configuration Options

Stežna jedinica	Clamping unit
Pomeranje i fiksiranje ploče uređaja za duvanje	Moving and fixing platen blowing device
Pneumatski uređaj za izbacivanje	Pneumatic ejection device
Hidraulička jedinica (Vrata ventila zaustavljanja)	Hydraulic unit (Hydraulic stop valve gate)
Hidraulička jedinica zaustavljanja (programabilan rad)	Hydraulic stop device (programmable action)
Pneumatski uređaj za zaustavljanje	Pneumatic stop device
Kontrolni uređaj vrata ventila	Valve gate control device
Merač protoka	Flow meter
Specijalni korisnički šablon (T-priključak sa navojem)	Special custom template (T-slot threaded hole)
Električno kolo kontrole za otpuštanje	Electric circuit of control for unscrew driving
Povećavanje maksimalne debljine kalupa	Increase max. mold thickness
Klizna zaštita kalupa	Mold slider protection
Funkcija izbacivanja pod pritiskom	Eject compression function
Pneumatski/hidraulički uređaj za automatsko stezanje kalupa	Mold automatically tighten device (pneumatic/hydraulic)
Izbacivač sa samozaključavajućom funkcijom	Ejector with self-locking function
Kontrolni uređaj unutrašnjeg vrućeg klipa	Internal hot runner control device
Rampa prenosa proizvoda	Product feeding ramp
Bočna radna električna vrata	Operation side electric door
Kontrola zatvorenog kruga sile zatvaranja	Clamping force closed-loop control
Uređaj za sortiranje po kvalitetu (obratna tabla u oba smera)	Quality sorting device (Flip board in both directions)
Uređaj za detekciju ispadanja proizvoda	Product drop detection device

Uređaj za brizganje plastike	Plastic injection device
Tvrd hromirani sklop puža	Hard chrome plated screw assembly
Antikorozivni sklop vratila visoke otpornosti na habanje	High wear-resistant high corrosion screw assembly
Grejni prsten ventila visokog kapaciteta	High capacity nozzle heating ring
Dugački ventil	Lengthen nozzle
Prekidačka funkcija V/P pritiska u odlivku	In-mold pressure V/P switching function
Igličasti ventil pneumatske mlaznice	Needle valve pneumatic nozzle
Mlaznica raspršivača	Spring nozzle
Glava mlaznice	Custom nozzle head
Standardni rezervoar	Standard hopper
Rezervoar od nerđajućeg čelika	Stainless steel hopper
Sferni uređaj za IC grejanje	Barrel infrared heating device
Energetsko štedljivi cilindar izolacionog rukava	Energy-saving cylinder insulation sleeve

Kontrolni uređaj za nadzor	Control monitoring device
Temperatura kalupa prikaz i kontrola	Mold temperature display and control
Električno okruženje kvalitativnog sortiranja	Quality sorting electrical interface
Detekcija prekida inteligentnog grejača	Intelligent heater break detection
Kolo povećanja tečnosti za hlađenje	Increase cooling water circuit
Električno okruženje robot European 67	Robot European 67 electrical interface
Električno okruženje mešanja gasom	Gas-assisted injection electrical interface
Električno okruženje magnetni šablon	Magnetic template electrical interface
Električno okruženje detekcije pritiska u šupljini kalupa	Mold cavity pressure detection electrical interface



SANJA PLAST S.R.

Maloprodaja, Veleprodaja / Retail, Wholesale:
Kralja Petra I Karađorđevića 35
22330 Nova Pazova
Republika Srbija

Telefon / Phone:
+381 22 323 596
+381 22 322 296
+381 63 826 3339
+381 65 3333 558

E-mail:
slavko.sanjaplast@gmail.com
sanjaplast@gmail.com

Web:
www.sanjaplast.rs